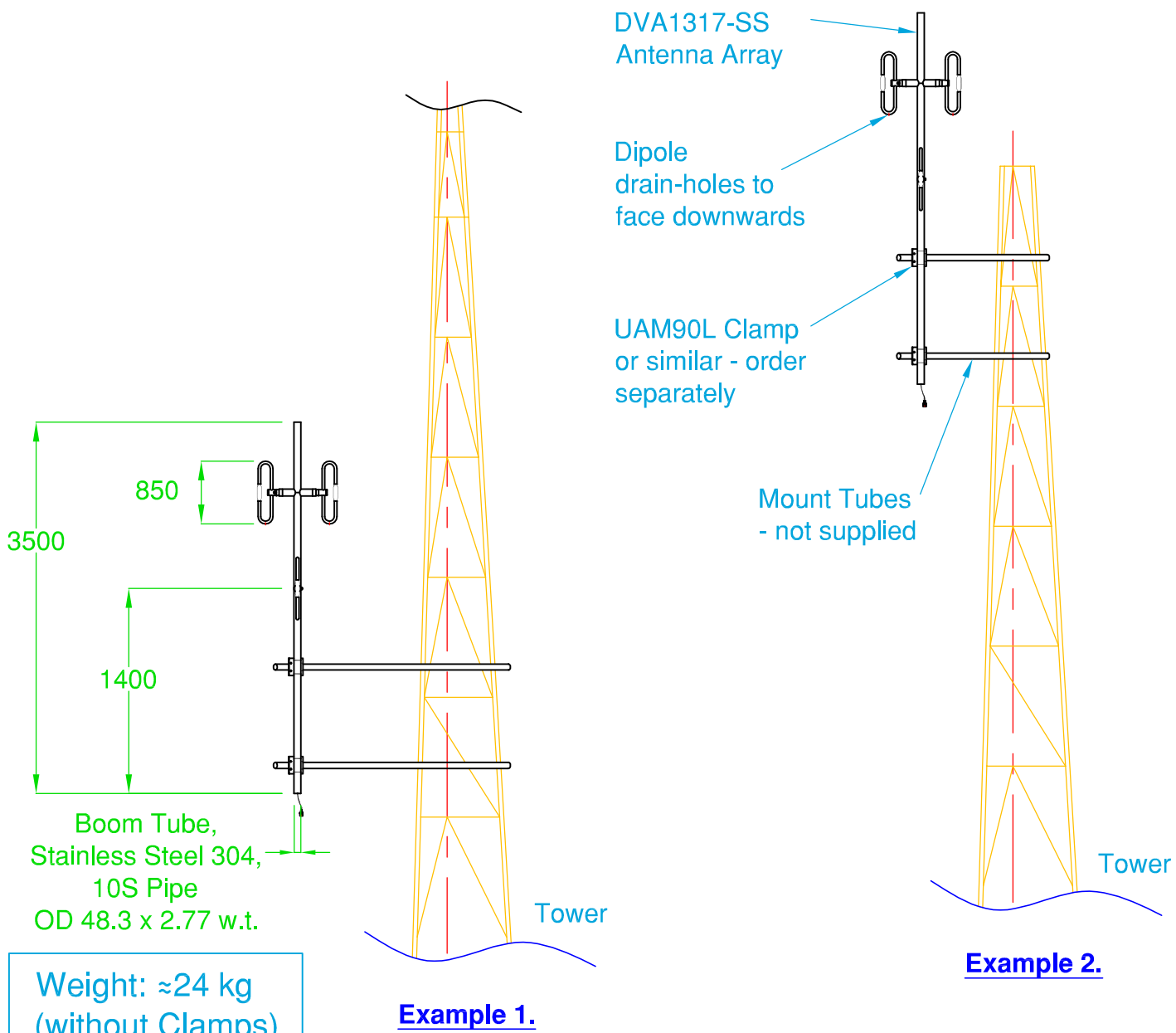


Top View



Weight: \approx 24 kg
(without Clamps)

Sheet 1.

DVA-1317-SS-R & DVA-1317-SS-R-B

VHF Omni Array Installation Guide

Important Note for Installers:

- During site assembly of the Array it is essential that Cables are handled with great care.

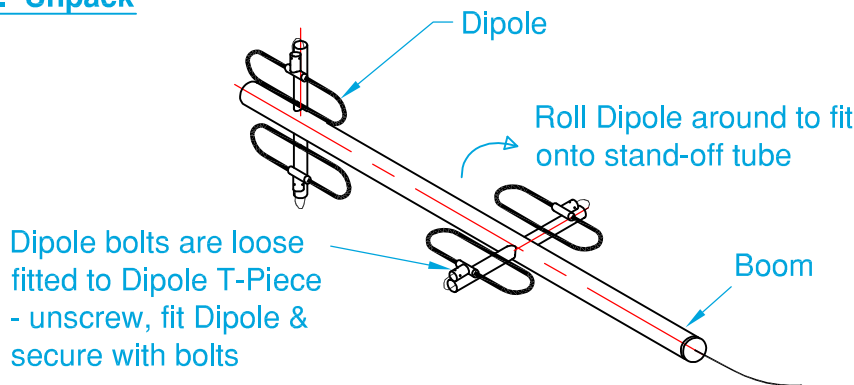
Recommended Tools:

- Side Cutters
- 8mm Spanner

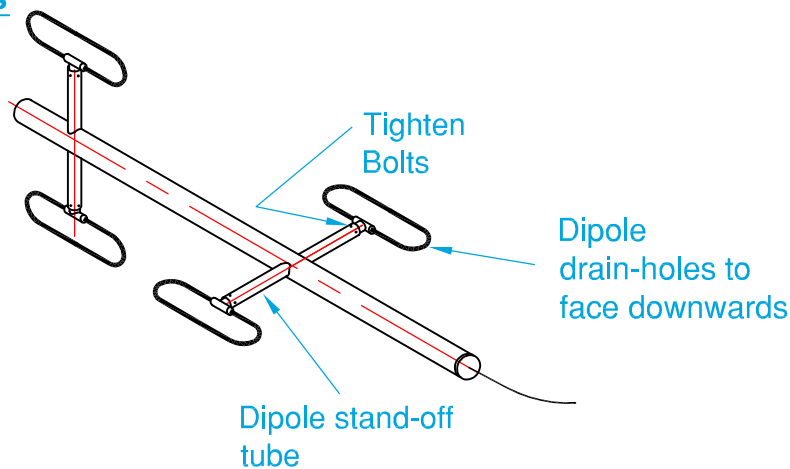
Packing Notes:

- The Array is 'flat packed' for shipping
- Dipoles are partially dissembled and require re-assembly

Step 1: Unpack



Step 2: Fasten Dipoles



Assembly Notes:

- Cut the cable ties holding the first Dipole & carefully roll the Dipole onto the stand-off - fasten Dipole using the 3 bolts that are loose fitted into the Dipole T-Piece - Note that all Dipoles have a drain hole which must face downwards when the Antenna is finally installed
- Sight the Dipoles from the end of the Boom .. each Dipole should be at 90° to its neighbouring Dipole and in-line with the Boom.
- Check the tightness of all fasteners

Sheet 2.

DVA-1317-SS-R & DVA-1317-SS-R-B

VHF Omni Array Installation Guide